

LEGEND

ROADS AND ROADWAY FEATURES

- UNIMPROVED ROAD
- GRAVEL
- PAVED ROAD
- UNDIVIDED HIGHWAY
- DIVIDED HIGHWAY
- INTERSTATE SYSTEM
- CITY STREETS

HIGHWAY BRIDGES

- BRIDGE 50 FEET AND OVER
- BRIDGE 40 FEET AND UNDER
- FERRY (FREE OR TOLL)
- HIGHWAY GRADE SEPARATION
- HIGHWAY INTERCHANGE

ROAD SYSTEM DESIGNATION

- INTERSTATE NUMBERED
- U.S. NUMBERED
- STATE NUMBERED

RAILROADS

- RAILROAD STATION
- RAILROAD ABOVE
- RAILROAD BELOW

AIRPORTS

- MILITARY AIRPORT
- AIRPORT, LIMITED FACILITIES
- LANDING AREA OR STRIP (INCLUDING PRIVATE AIR FIELDS)
- AIRPORT, COMPLETE FACILITIES
- AIRWAY LIGHT BEACON

DRAINAGE AND NATURAL FEATURES

- NARROW STREAM
- DRAINAGE DITCH
- LAKES AND RESERVOIRS
- OVERFLOW LAND
- MARSH OR SWAMP LAND

BOUNDARIES

- STATE BOUNDARY
- COUNTY BOUNDARY
- BEAT LINE
- CONGRESSIONAL TOWNSHIP
- SECTION LINE
- NATIONAL OR STATE FOREST
- RECREATION PARKS ETC.
- URBAN AREA COMPACT
- INCORPORATED PLACES
- UNINCORPORATED DELINEATED AREAS

NAVIGATION

- DOCK, PIER, OR LANDING
- LEVEE OR DIKE
- LEVEE OR DIKE WITH ROAD

CITY AND VILLAGE CENTERS

- COUNTY SEAT
- OTHER CITIES AND VILLAGES

MISCELLANEOUS

- TRANSLATION STATION
- BENCH MARK WITH ELEVATION

PUBLIC SERVICE FACILITIES

- OBSERVATION OR LOOKOUT TOWER
- HIGHWAY GARAGE
- POST OFFICE
- POWER PLANT
- WEIGHT STATION
- HOSPITAL
- SEWAGE DISPOSAL PLANT
- COMMUNITY CENTER OR TOWN HALL
- NATIONAL PARK GARAGE
- FIRE STATION
- SANITARY LAND FILL
- PUBLIC LIBRARY
- CORRECTIONAL INSTITUTION
- POLICE STATION
- GRAVEL PIT
- REST AREA

CONSERVATION AND RECREATION

- MOTEL OR HOTEL
- CAMP OR LODGE
- HISTORIC OR SCENIC SITE
- FAR GROUNDS OR RACE COURSE
- SMALL PARK
- GOLF COURSE OR COUNTRY CLUB

INDUSTRIAL

- FACTORY OR INDUSTRY
- SEASONAL INDUSTRY

CHURCHES AND CEMETERIES

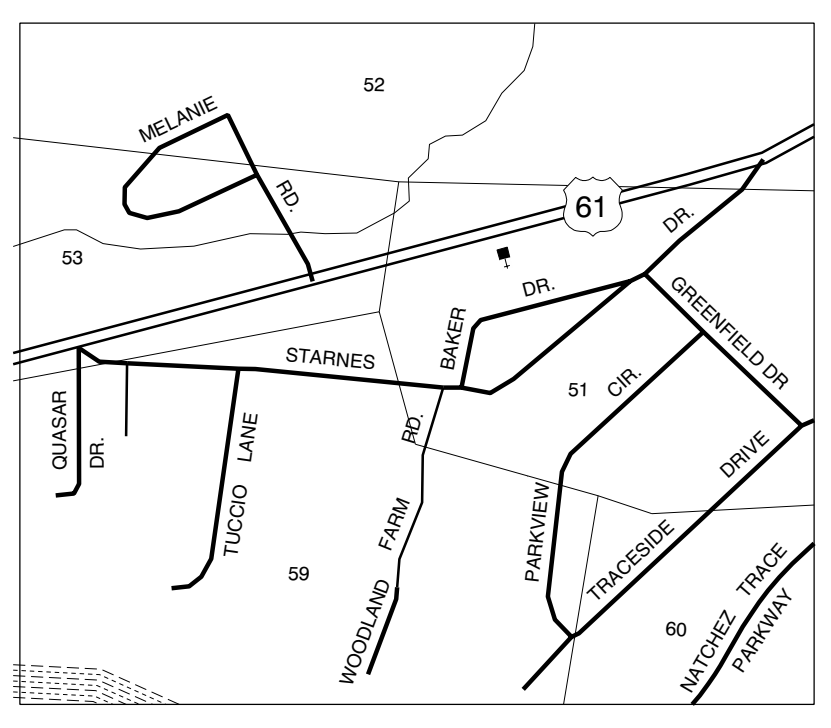
- CHURCH
- CEMETERY
- CHURCH WITH CEMETERY ADJACENT

EDUCATION

- SCHOOL

MISCELLANEOUS STRUCTURES

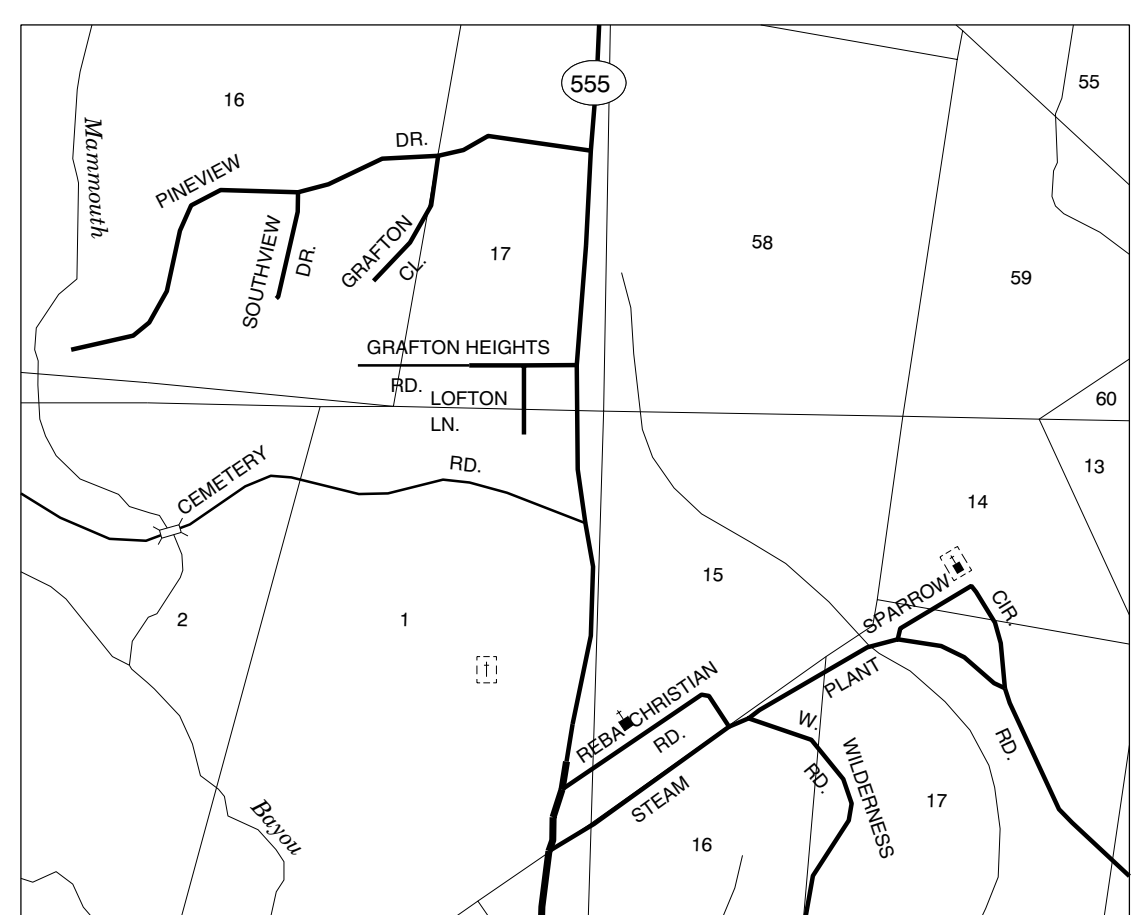
- ARMORY
- FORT, ARMY CAMP



Inset B
T 7 N R 2 W

SCALE IN KILOMETERS

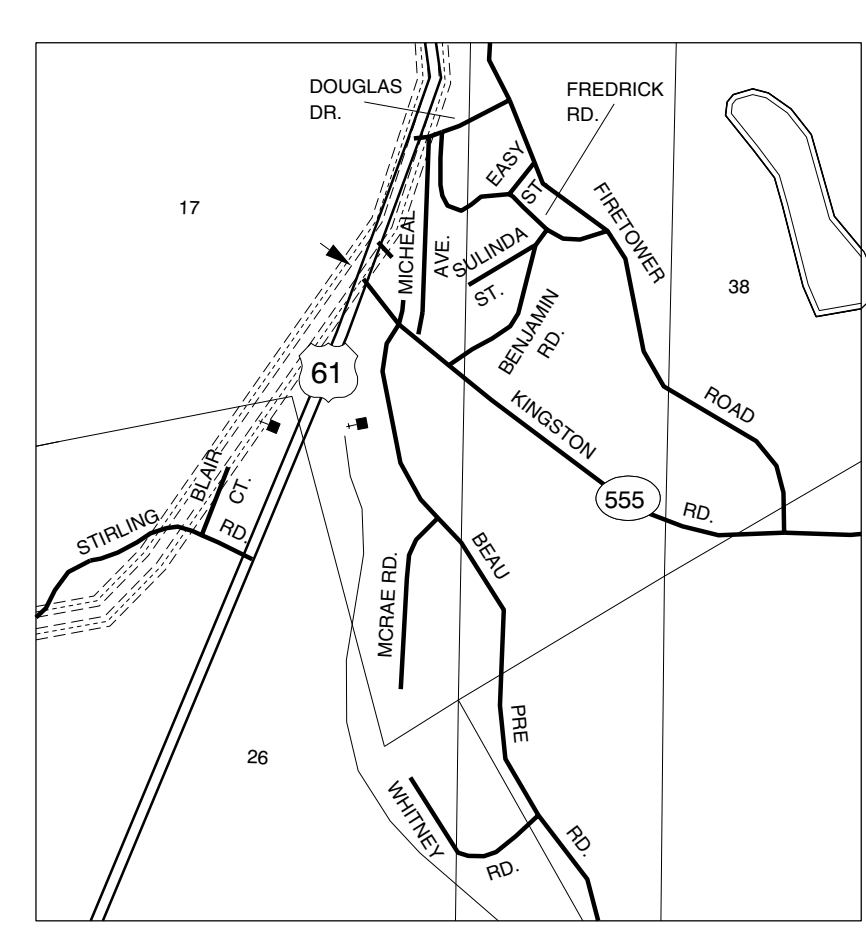
SCALE FOR ENLARGEMENTS IN MILES



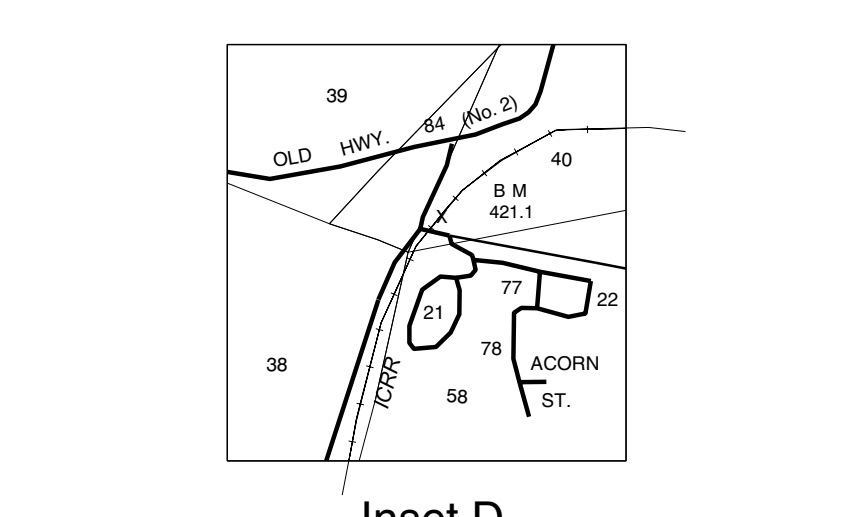
Inset A
T 7 N T 8 N R 2 W R 3 W

SCALE IN KILOMETERS

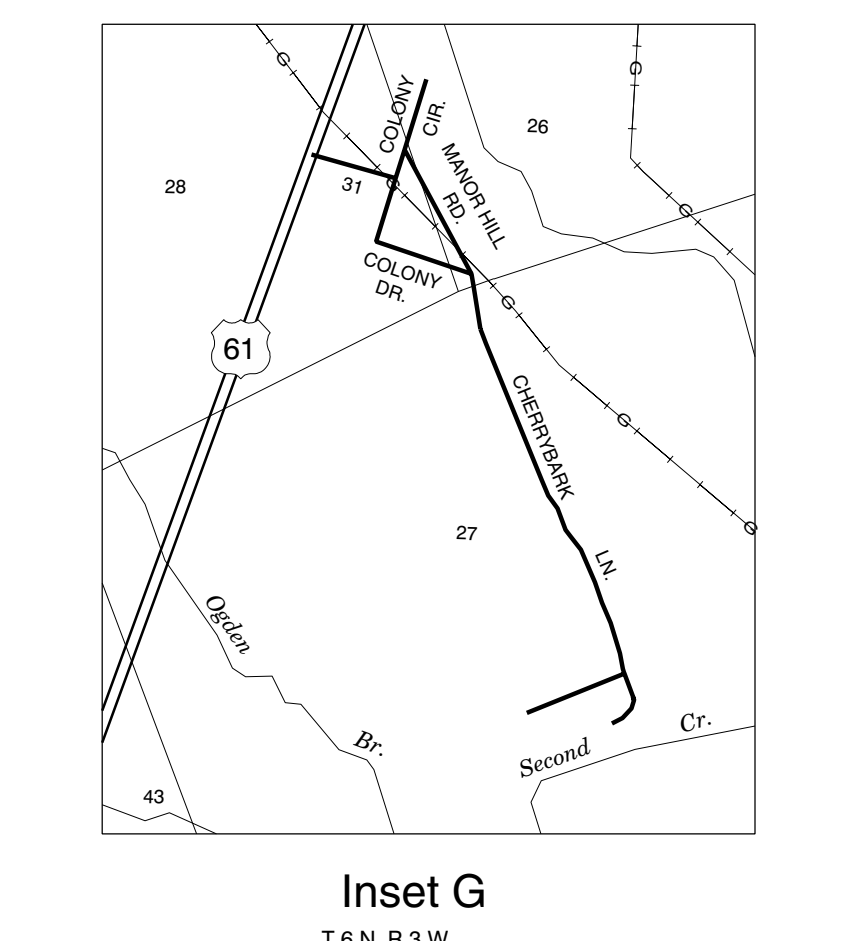
SCALE FOR ENLARGEMENTS IN MILES



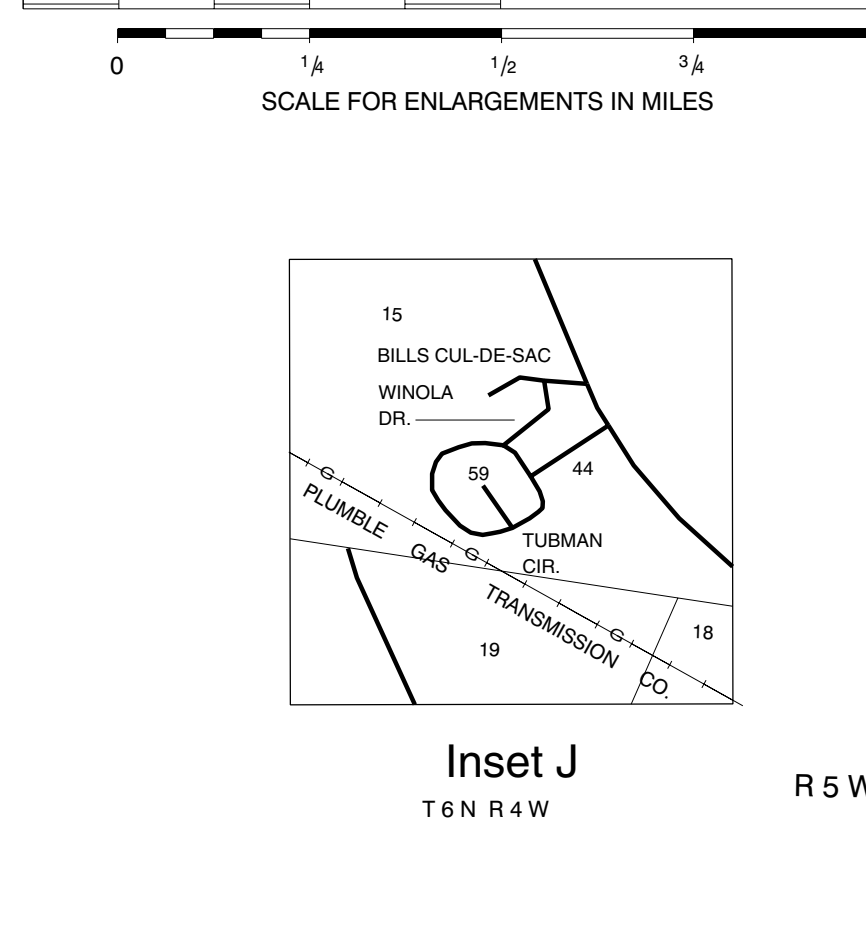
Inset F
T 6 N R 2 W R 3 W



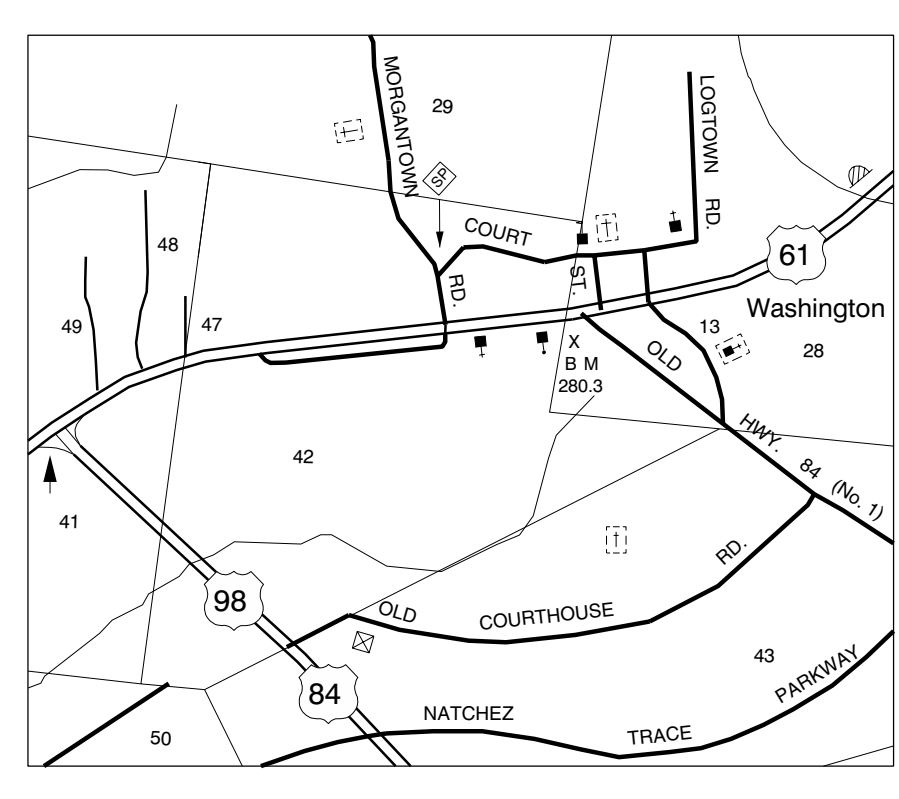
Inset D
T 7 N R 2 W



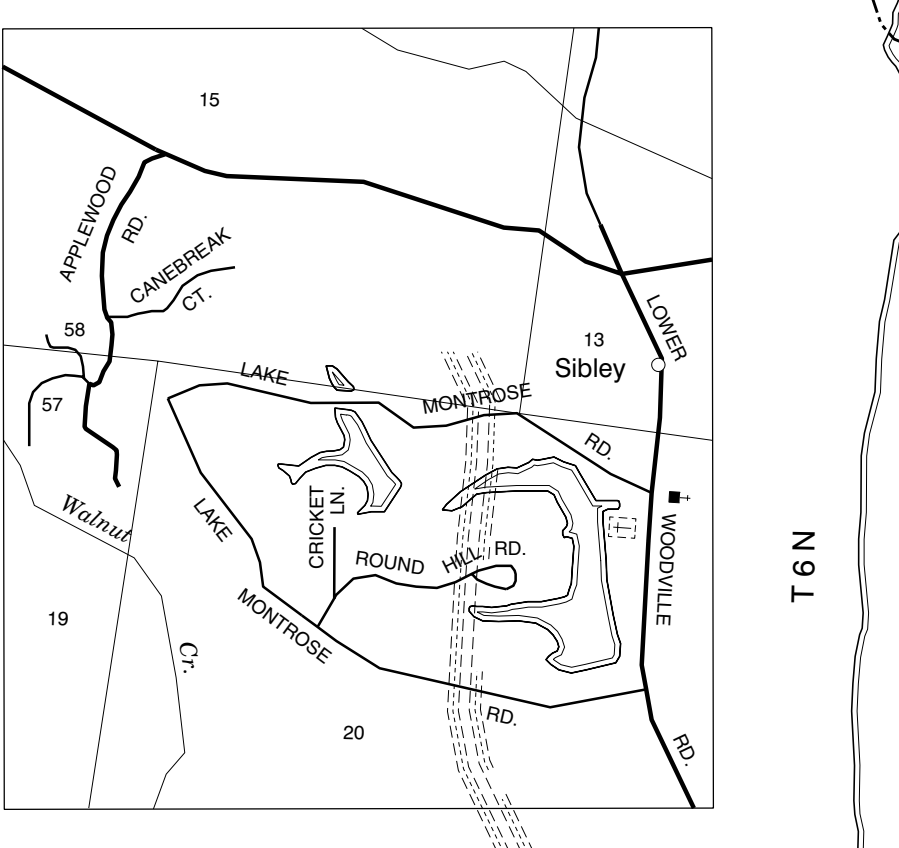
Inset G
T 6 N R 3 W



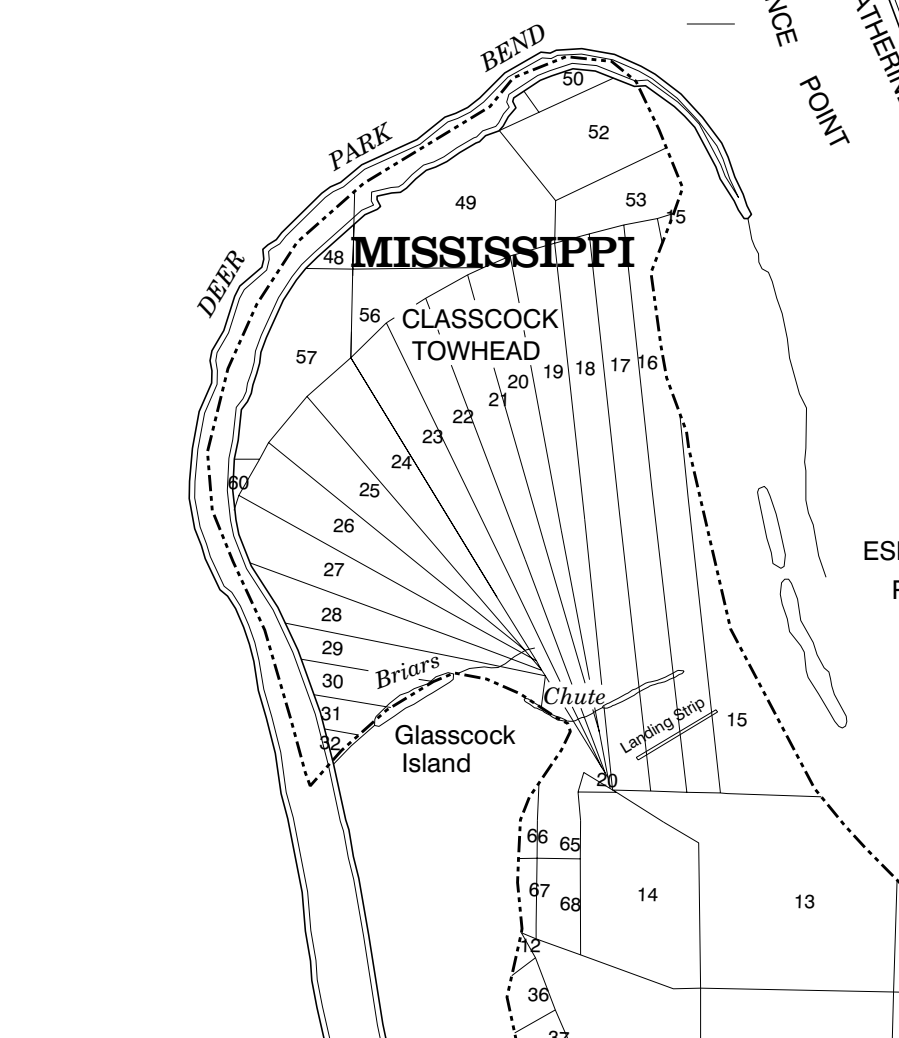
Inset J
T 6 N R 4 W



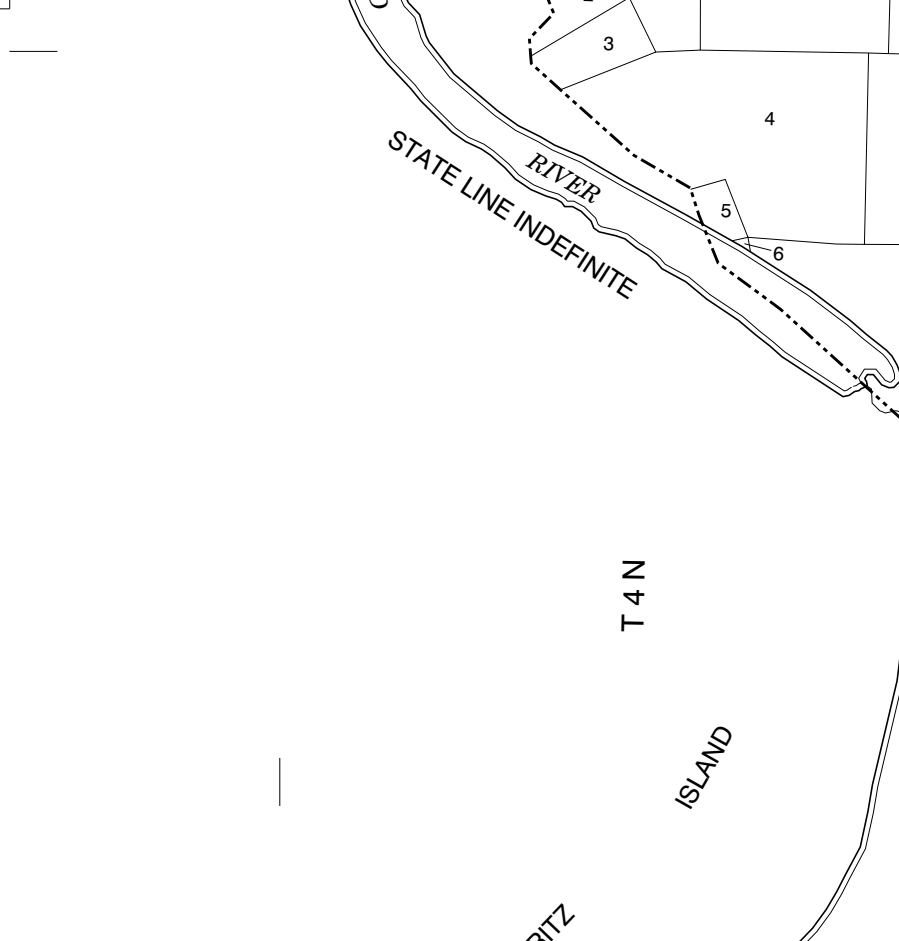
Inset C
T 7 N R 2 W



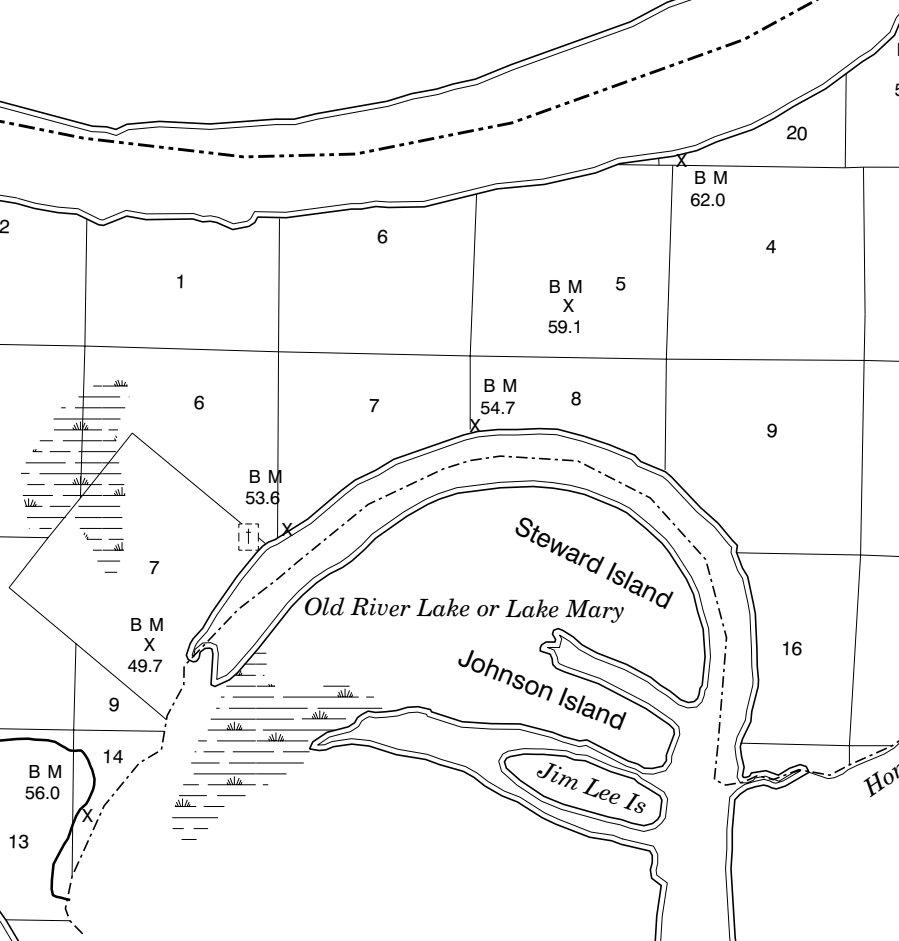
Inset H
T 5 N R 3 W



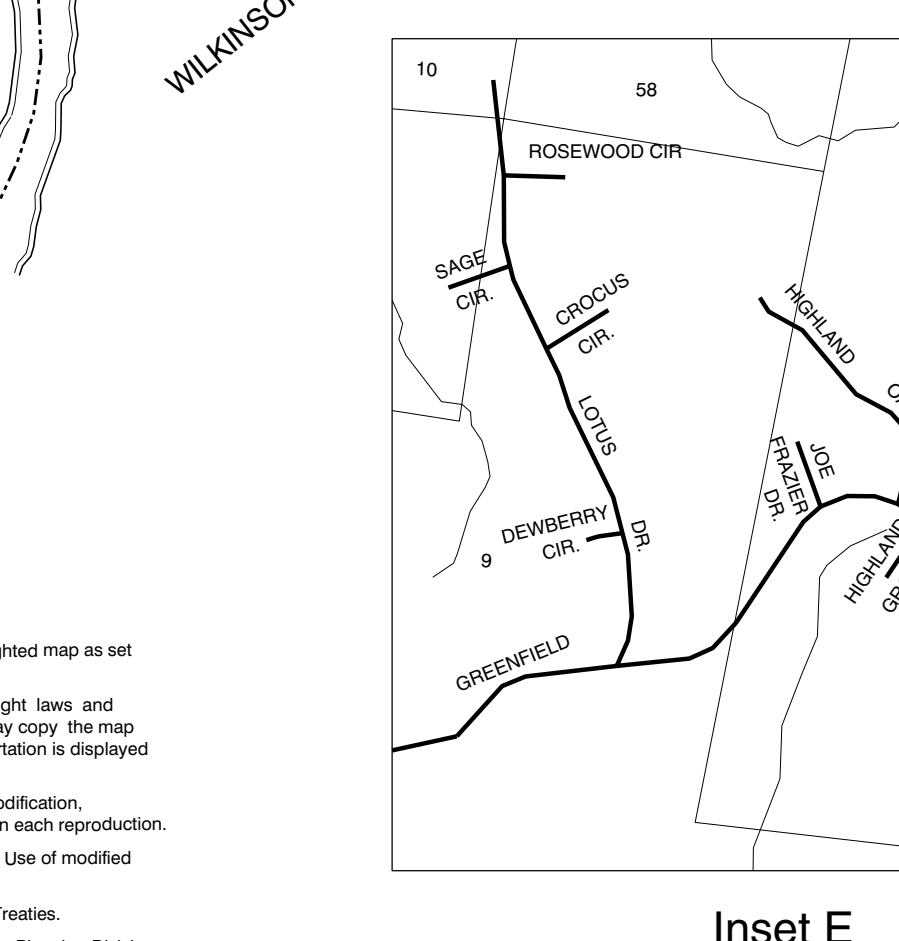
Inset I
T 6 N R 3 W



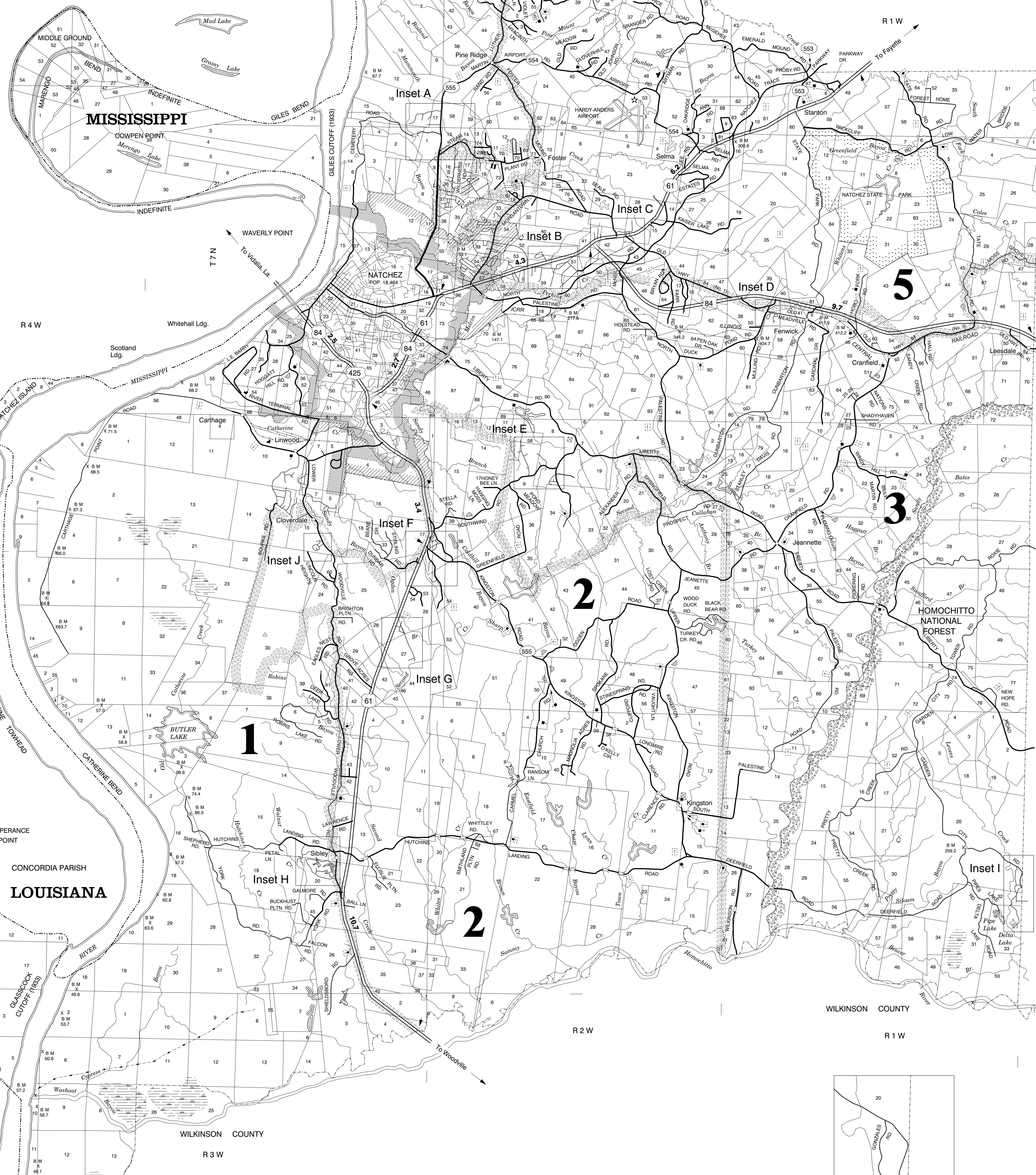
Inset H
T 5 N R 3 W



Inset E
T 6 N R 3 W



Inset E
T 6 N R 3 W



- ADAMS CO. STREET NAMES
- ADAMS ST. R1
 - ADAMS ST. R2
 - ADAMS ST. R3
 - ADAMS ST. R4
 - ADAMS ST. R5
 - ADAMS ST. R6
 - ADAMS ST. R7
 - ADAMS ST. R8
 - ADAMS ST. R9
 - ADAMS ST. R10
 - ADAMS ST. R11
 - ADAMS ST. R12
 - ADAMS ST. R13
 - ADAMS ST. R14
 - ADAMS ST. R15
 - ADAMS ST. R16
 - ADAMS ST. R17
 - ADAMS ST. R18
 - ADAMS ST. R19
 - ADAMS ST. R20
 - ADAMS ST. R21
 - ADAMS ST. R22
 - ADAMS ST. R23
 - ADAMS ST. R24
 - ADAMS ST. R25
 - ADAMS ST. R26
 - ADAMS ST. R27
 - ADAMS ST. R28
 - ADAMS ST. R29
 - ADAMS ST. R30
 - ADAMS ST. R31
 - ADAMS ST. R32
 - ADAMS ST. R33
 - ADAMS ST. R34
 - ADAMS ST. R35
 - ADAMS ST. R36
 - ADAMS ST. R37
 - ADAMS ST. R38
 - ADAMS ST. R39
 - ADAMS ST. R40
 - ADAMS ST. R41
 - ADAMS ST. R42
 - ADAMS ST. R43
 - ADAMS ST. R44
 - ADAMS ST. R45
 - ADAMS ST. R46
 - ADAMS ST. R47
 - ADAMS ST. R48
 - ADAMS ST. R49
 - ADAMS ST. R50
 - ADAMS ST. R51
 - ADAMS ST. R52
 - ADAMS ST. R53
 - ADAMS ST. R54
 - ADAMS ST. R55
 - ADAMS ST. R56
 - ADAMS ST. R57
 - ADAMS ST. R58
 - ADAMS ST. R59
 - ADAMS ST. R60
 - ADAMS ST. R61
 - ADAMS ST. R62
 - ADAMS ST. R63
 - ADAMS ST. R64
 - ADAMS ST. R65
 - ADAMS ST. R66
 - ADAMS ST. R67
 - ADAMS ST. R68
 - ADAMS ST. R69
 - ADAMS ST. R70
 - ADAMS ST. R71
 - ADAMS ST. R72
 - ADAMS ST. R73
 - ADAMS ST. R74
 - ADAMS ST. R75
 - ADAMS ST. R76
 - ADAMS ST. R77
 - ADAMS ST. R78
 - ADAMS ST. R79
 - ADAMS ST. R80
 - ADAMS ST. R81
 - ADAMS ST. R82
 - ADAMS ST. R83
 - ADAMS ST. R84
 - ADAMS ST. R85
 - ADAMS ST. R86
 - ADAMS ST. R87
 - ADAMS ST. R88
 - ADAMS ST. R89
 - ADAMS ST. R90
 - ADAMS ST. R91
 - ADAMS ST. R92
 - ADAMS ST. R93
 - ADAMS ST. R94
 - ADAMS ST. R95
 - ADAMS ST. R96
 - ADAMS ST. R97
 - ADAMS ST. R98
 - ADAMS ST. R99
 - ADAMS ST. R100

- ADAMS CO. STREET NAMES NOT SHOWN
- ADAMS ST. R1
 - ADAMS ST. R2
 - ADAMS ST. R3
 - ADAMS ST. R4
 - ADAMS ST. R5
 - ADAMS ST. R6
 - ADAMS ST. R7
 - ADAMS ST. R8
 - ADAMS ST. R9
 - ADAMS ST. R10
 - ADAMS ST. R11
 - ADAMS ST. R12
 - ADAMS ST. R13
 - ADAMS ST. R14
 - ADAMS ST. R15
 - ADAMS ST. R16
 - ADAMS ST. R17
 - ADAMS ST. R18
 - ADAMS ST. R19
 - ADAMS ST. R20
 - ADAMS ST. R21
 - ADAMS ST. R22
 - ADAMS ST. R23
 - ADAMS ST. R24
 - ADAMS ST. R25
 - ADAMS ST. R26
 - ADAMS ST. R27
 - ADAMS ST. R28
 - ADAMS ST. R29
 - ADAMS ST. R30
 - ADAMS ST. R31
 - ADAMS ST. R32
 - ADAMS ST. R33
 - ADAMS ST. R34
 - ADAMS ST. R35
 - ADAMS ST. R36
 - ADAMS ST. R37
 - ADAMS ST. R38
 - ADAMS ST. R39
 - ADAMS ST. R40
 - ADAMS ST. R41
 - ADAMS ST. R42
 - ADAMS ST. R43
 - ADAMS ST. R44
 - ADAMS ST. R45
 - ADAMS ST. R46
 - ADAMS ST. R47
 - ADAMS ST. R48
 - ADAMS ST. R49
 - ADAMS ST. R50
 - ADAMS ST. R51
 - ADAMS ST. R52
 - ADAMS ST. R53
 - ADAMS ST. R54
 - ADAMS ST. R55
 - ADAMS ST. R56
 - ADAMS ST. R57
 - ADAMS ST. R58
 - ADAMS ST. R59
 - ADAMS ST. R60
 - ADAMS ST. R61
 - ADAMS ST. R62
 - ADAMS ST. R63
 - ADAMS ST. R64
 - ADAMS ST. R65
 - ADAMS ST. R66
 - ADAMS ST. R67
 - ADAMS ST. R68
 - ADAMS ST. R69
 - ADAMS ST. R70
 - ADAMS ST. R71
 - ADAMS ST. R72
 - ADAMS ST. R73
 - ADAMS ST. R74
 - ADAMS ST. R75
 - ADAMS ST. R76
 - ADAMS ST. R77
 - ADAMS ST. R78
 - ADAMS ST. R79
 - ADAMS ST. R80
 - ADAMS ST. R81
 - ADAMS ST. R82
 - ADAMS ST. R83
 - ADAMS ST. R84
 - ADAMS ST. R85
 - ADAMS ST. R86
 - ADAMS ST. R87
 - ADAMS ST. R88
 - ADAMS ST. R89
 - ADAMS ST. R90
 - ADAMS ST. R91
 - ADAMS ST. R92
 - ADAMS ST. R93
 - ADAMS ST. R94
 - ADAMS ST. R95
 - ADAMS ST. R96
 - ADAMS ST. R97
 - ADAMS ST. R98
 - ADAMS ST. R99
 - ADAMS ST. R100

GENERAL HIGHWAY MAP

ADAMS COUNTY

MISSISSIPPI
© 2001
REVISED: 03/2009

MISSISSIPPI DEPARTMENT OF TRANSPORTATION
PLANNING DIVISION
IN COOPERATION WITH THE
U.S. DEPARTMENT OF TRANSPORTATION
FEDERAL HIGHWAY ADMINISTRATION

TRANSVERSE MERCATOR PROJECTION,
STATE PLANE COORDINATE SYSTEM 1983

SCALE IN KILOMETERS

SCALE IN MILES

DATA SOURCES

- 1996 ASCS AERIAL PHOTOS
- 1987 USGS DLG
- 1996 MOOT FIELD INVENTORY
- 2000 POPULATION 34,340
- 1995 BEAT LINES

THIS MAP WAS COMPUTER GENERATED